



# Expert Movie Clips Screen Saver Help

For Help on Help, Press F1

---



## [Using Expert Movie Clips](#)

Information on using Expert Movie Clips including setting up, configuring, and customizing your own selections.



## [Customer Support](#)

All Expert Software customers in need of product assistance can receive free support Monday through Friday from 9:00 AM to 5:00 PM EST.



## [About Expert Movie Clips Screen Saver](#)

Program credits and further information about Expert Movie Clips Screen Saver for Windows.

# Using Expert Movie Clips

---



- ▶ [Setting Up](#)
- ▶ [Starting Expert Movie Clips Screen Saver](#)
- ▶ [Editing Your Show](#)
- ▶ [Selecting Playback Modes](#)
- ▶ [Troubleshooting](#)

# Setting Up

---

▶ **Before You Begin:**

For best results, you must run your Windows Setup Display in 256 color mode. To change color viewing mode, please refer to your Windows Manual or see the section [Troubleshooting](#) for more information.

▶ **Using Expert Movie Clips With Other Screen Savers:**

Make sure that only one screen saver program is turned on and active at any one time. If you have two screen savers on, you may confuse your system and cause it to operate improperly.

▶ **Configuring Expert Movie Clips as your Windows Screen Saver:**



Control Panel



Desktop

**1.** Double-click on the Control Panel icon in the Main Program Group of Program Manager.

**2.** Double-click on the Desktop icon.

**3.** In the Name Box of the Screen Saver section, click on the drop down list box and then Select Expert Movie Clips.

**4.** In the Delay Box enter the time (in minutes) before you want your screen saver to start.

## Starting Expert Movie Clips Screen Saver

---

▶ **To start Expert Movie Clips:**

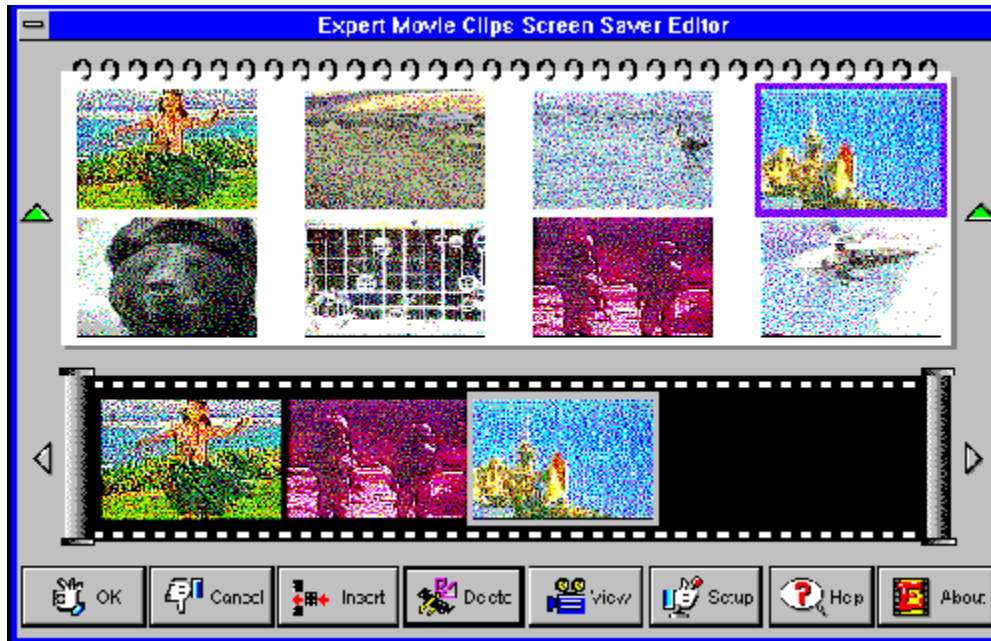


Double-click on the Play Movie Clips icon located in the Expert Software program group. The Screen Saver will activate automatically.

## Editing Your Show

---

Click on the screen below to learn about individual button functions and features:



- ▶ **To create your own show:**
  1. 'Drag and Drop' the clip from the movie library to the storyboard in the order you want them to be played back. Use the arrows to scroll through the library and the storyboard.

**(Or) 2.** Select a clip and click on the **Insert** button.
- ▶ **To change the order of the clips on the storyboard:**

'Drag and Drop' the selected clip to the desired position on the storyboard.
- ▶ **Changing the Selection of Clips from the CD-ROM:**

If you want to change the selection of clips that are on your hard drive, simply run the Movie Clips Editor and change the selected clips on the storyboard.

See also:

[Adding Your Own Clips](#)

## Adding Your Own Clips

### ▶ **Adding Your Own Clips:**

Expert Movie Clips Allows you to add your own .AVI video, .WAV sound files and other formats with MCI connections:

1. From Program Manager, double-click on the File Manager icon in the Main program group.
2. Select the .AVI, .WAV or other clips you want to use.
3. Under File, choose Copy.
4. In the "To" box, type C:\XMOVIE.

**Note:** if you have chosen a different directory for your movies, then you should copy the files to this directory.

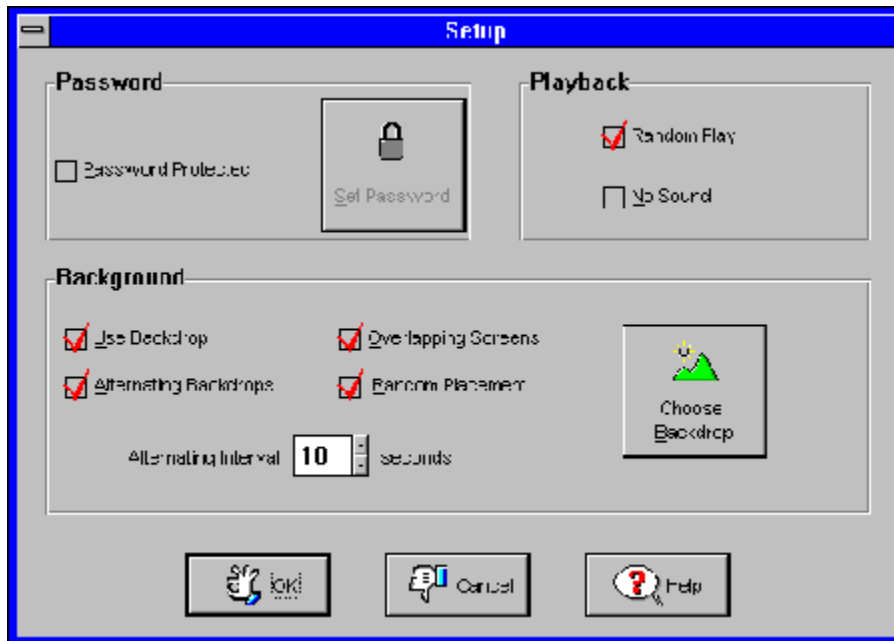
The .AVI (or other MCI format) clips will appear in the Movie Library in the Expert Movie Clips Screen Saver Editor as file names only. They will however, play within the screen saver.

## Selecting Playback Modes

---

The Setup dialog box allows you to select various playback modes.

Click on the screen below to learn about individual button functions and features:



# Customer Support

---



Your purchase of an Expert product includes free product support to help you get the most out of your software. All Expert products are thoroughly tested and come with a user's guide. In most cases, the answer to many of your questions are in this guide.

If you are having problems starting or running the program, please feel free to give us a call. We can be reached at (305) 567-9996, Monday through Friday, 9:00AM to 5:00PM EST (Eastern Standard Time).

When you call, you should be at your computer. Be ready to give the Product Support Specialist the following information:

The 10-digit program version number from the front of your program disk.  
The version of DOS that is installed on your computer.  
You can determine the version by typing VER at the DOS prompt.

The version of Windows installed on your computer.

The type of hardware you are using:

- Brand of computer you own.
- CPU type (80386, 80486, Pentium).
- Video type (EGA, VGA, Super VGA).
- Model and type of printer.

The exact wording of any messages that appeared on the screen.

What happened and what you were doing when the problem occurred.

We encourage Windows 3.1 (or MS-DOS 6.X) users who need product support to print an MSD report. Have it available for the Product Support Specialist who answers your call. You will find the MSD (Microsoft Diagnostics) program in either the Windows or the DOS directory.



## **About Expert Movie Clips Screen Saver**

---

Expert Movie Clips Screen Saver © 1994 Access Softek, © 1994 Expert Software, Inc.

Product Manager: Charlene Hernandez

Quality Assurance: Patty Fuquen, Cameron Watson

Version 1.0: December 1994

*No video clips in this product may be copied or reproduced.*

# Troubleshooting

---

Below are some common troubleshooting tips you might find useful as you install and run Expert Movie Clips Screen Saver.

▶ **Installing a 256-color driver:**

Expert Movie Clips performs best with a 256-color or more display. Many displays are set to VGA, which displays only 16 colors. To change your display, follow the step-by-step instructions below:

1. In the Main program group, choose the Windows Setup icon.
2. From the Options menu, choose Change System Settings.
3. Click on the arrow at the right of the Display line to open the drop-down driver list. Or press [Alt+Down Arrow].
4. Highlight your video card. If you don't know the name of your video card, or your card isn't listed, stop here (choose the Cancel button) and read the instruction below. **Note:** DO NOT CHOOSE THE VIDEO 7 DRIVER UNLESS YOU ARE ABSOLUTELY SURE THAT IT IS COMPATIBLE WITH YOUR SYSTEM!
5. Select the settings you want to use, then click OK.
6. From the Options menu, choose Exit.
7. Click on the Restart Windows button for the new setting to take effect.

▶ **I don't know what kind of SVGA video card is installed on my computer:**

To identify your SVGA board, run Microsoft Diagnostics (MSD) from C:\Windows in DOS.

1. Go to DOS by closing Windows. (Do not use the MS-DOS Prompt icon in the Main program group.)
2. At the C: prompt, type [cd\windows] and press [Enter].
3. At the C:\windows prompt, type [MSD] and press [Enter].
4. Type [v] to enter the Video window. Information about your video card, including the manufacturer's name will be displayed.
5. To exit the Video window, press [Enter]. To exit MSD, press [F3].

▶ **My video card isn't listed on the drop-down driver list:**

Windows 3.1 supplies 256-color drivers only for Video 7 SVGA boards. If you have another manufacturer's SVGA board, you must install the drivers for it. These come bundled with your video board on a floppy disk labeled "VGA Utilities" or "OEM Disk". To install your drivers, you simply need to give the path of your driver and Windows will read it off your OEM disk. Use File Manager to identify this path, as follows:

1. Run Windows and enter File Manager.
2. Insert your OEM disk into drive A (or other drive) and click on the icon for that drive. Your files will be displayed.
3. Look for the file called "oemsetup.inf" in the Windows 3.1 directory. The name of this directory is the path for your drivers.

Now install your driver, following the instructions below. **Note:** You may need your Windows 3.1 disks to complete this process.

1. In the Main Group, choose the Windows Setup icon.
2. From the Options menu, choose Change System Settings.
3. Click on the arrow at the right of the Display line to open the list of drivers. Highlight the last entry: "Other display (Requires disk from OEM)." A dialog box will ask you to specify the path of your display drivers.
4. Put the OEM disk in drive A (or other drive), and close the drive door, or

type the path to the appropriate device driver file. Then choose the OK button. A list of video drivers will be displayed. Highlight the driver for your board and choose the OK button.

5. You may be prompted to insert a Windows 3.1 disk. Follow the prompts in the dialog boxes until you return to the main Setup window.

6. From the Options menu, choose Exit.

7. Click on the Restart Windows button for the new setting to take effect.

▶ **I installed a 256-color driver and my screen went crazy:**

You selected the wrong video driver, probably a Video 7 SVGA driver. To correct your display, run Setup from C:\Windows in DOS, as follows. **Note:** you can quit Setup any time by pressing [F3].

1. Close Windows by typing [Alt+F4] and pressing [Enter]. This returns you to DOS.

2. At the C:\ prompt, type [cd\Windows] and press [Enter].

3. At the C:\Windows prompt, type [setup] and press [Enter].

4. To restore your screen, reinstall the VGA driver. Use the up or down arrows to highlight the Display line and press [Enter] to view your display options. Now use the up or down arrow to highlight the line that reads "VGA." Press [Enter].

5. Press [Enter] to accept the new setting. This will return you to the DOS prompt.

6. When you restart Windows, the new setting will be in effect. Now install the correct SVGA driver by following the instructions above.

## **Editor - OK**

Saves the configuration chose in the Setup dialog box and installs the clips currently placed on the storyboard film strip to your hard drive.

## **Editor - Cancel**

Exits from the Expert Movie Editor without adding any clips to your hard drive.

## **Editor - Insert**

Inserts the selected movie clip to the film strip storyboard. These are the clips which will be saved to your hard drive when you click on the OK button.

## **Editor - Delete**

Removes the selected movie clip from the film strip storyboard and your hard drive.

## **Editor - View**

Previews the selected movie clip or the storyboard.



## **Editor - Setup**

Allows you to select from several playback options for the screen saver.

See: [Playback Modes](#)

## **Editor - Help**

Launches the Expert Movie Clips Screen Saver help file.

## **Editor - About**

Launches the About Expert Movie Clips Screen Saver dialog box.

## **Editor - Storyboard**

Drag and drop clips from the movie library here in the order you want them to be played back in.

See also:

[Editing Your Show](#)

## **Editor - Movie Library**

All available clips will be shown here. Drag and drop them to the storyboard below to select them for play.

## **Editor- Turn Page**

Use this button to turn the page in the Library and Storyboard viewers.

## **Setup - Use Backdrop**

Since your show will not be displayed on the whole screen, you may choose a backdrop in which to view your clips. Check the Use Backdrop box to display the backdrop.

## **Setup - Alternating Backdrops**

Click on the Alternating Backdrops box to alternate between a black background and a backdrop. The time interval between the backdrop swap can be adjusted from the alternating interval box.



## **Setup - Overlapping Screens**

When you have selected the Alternating Backdrops radio box, check the Overlapping Screens box to play your clips in different positions on the screen.

## **Setup - Choose Backdrops**

Click on Choose Backdrop to select from various backdrops to view your film clips in. Choose from Television, Theater, Newspaper, your Windows wallpaper, or define your own. A thumbnail of the chosen backdrop, with a movable icon, allows you to position your movie on the screen.

To create your own backdrop, select the User's Defined radio button and type the path and file name of an existing bitmap (.bmp). Movie Clips will save the four most recently used files for easy retrieval in the drop-down list box. If you check the Tiled box, Movie Clips will take the selected bitmap (.bmp) and tile it across your screen. You can make your own backdrops by using any paint program and saving the file with a .bmp extension.

## **Setup - Setting Passwords**

The Setup window allows you to select password options. To turn on the password protection, check the Password Protected box. To set or modify your password, click on Set Password.

## **Setup - Playback**

Choose Random Play to play your movie clips in random order, and choose No Sound to turn the sound off.

## **Setup - Cancel**

Click on Cancel to abandon any changes and to return to the Expert Movie Editor Screen.

## **Setup - Help**

Click on Help to bring up this help file.

## **Setup - OK**

Click on OK to accept your changes and to return to the Expert Movie Editor Screen.

